

**IES Report**

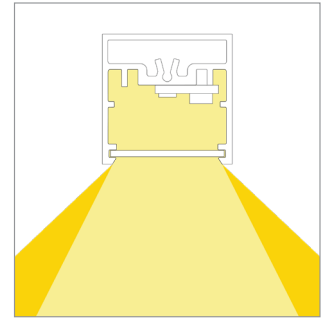
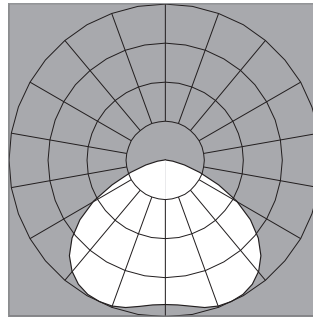
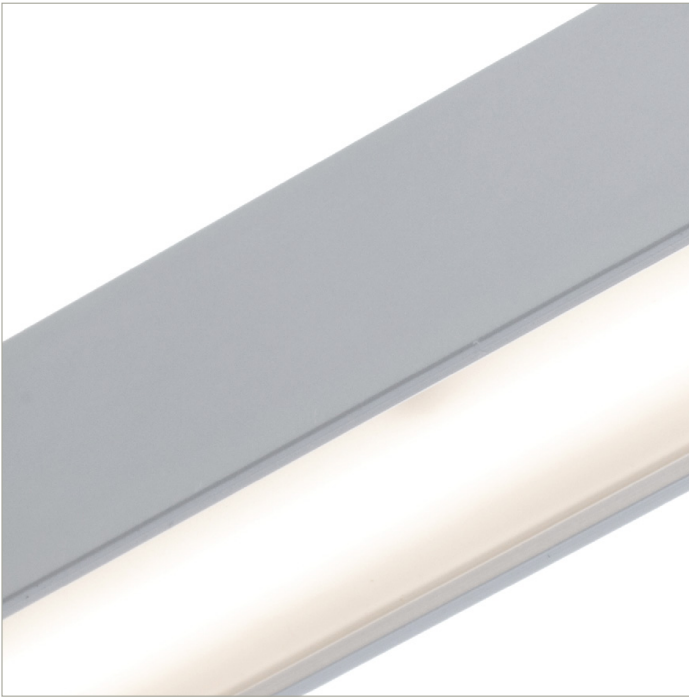
**BoxRail® | 107 | 120° FlyWing™ | 80 CRI | LO**

107-BX-XX-4-48-XX-XX-XX-XX-X-X-Z-LO-35-G2-X-XX-X

	2700K	3000K	3500K	4000K
Efficacy - Lumens per Watt	90	93	95	97
Total Lumens, 4' rail length (1219mm)	1340	1382	1411	1439
Lumens per foot (305mm)	335	346	353	360
Input Power (W), 4' rail length (1219mm)	15.0	15.0	15.0	15.0
Watts per foot (305mm)	3.8	3.8	3.8	3.8
CRI	85	85	85	85

Due to the large number of options in Vode’s product offering, most Vode IES reports are factored reports prepared from source reports. Source reports are the IES test reports prepared for Vode by an NVLAP accredited photometric test laboratory. Factored reports are based on data from the Vode source reports.

If the data above is in black, it is directly from a Vode source report. If it is in grey, it is factored from Vode source reports. Reference details on Vode source reports can be found on the [IES File Finder](#) page on [vode.com](#).



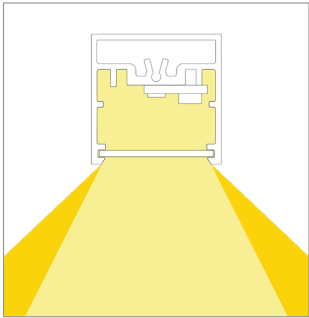
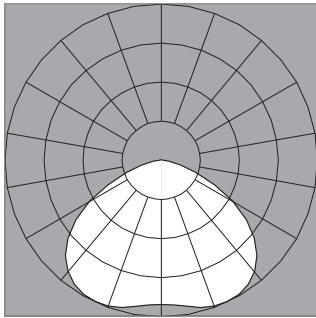
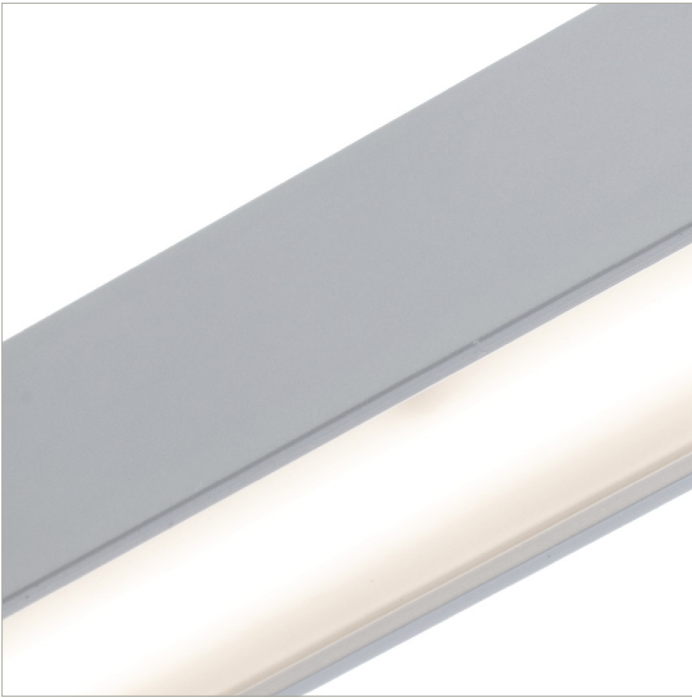
**IES Report**  
**BoxRail® | 107 | 120° FlyWing™ | 80 CRI | SO**

107-BX-XX-4-48-XX-XX-XX-X-X-Z-SO-35-G2-X-XX-X

	2700K	3000K	3500K	4000K
Efficacy - Lumens per Watt	112	115	118	120
Total Lumens, 4' rail length (1219mm)	2680	2765	2821	2878
Lumens per foot (305mm)	670	691	705	719
Input Power (W), 4' rail length (1219mm)	24.1	24.1	24.1	24.1
Watts per foot (305mm)	6.1	6.1	6.1	6.1
CRI	85	85	85	85

Due to the large number of options in Vode's product offering, most Vode IES reports are factored reports prepared from source reports. Source reports are the IES test reports prepared for Vode by an NVLAP accredited photometric test laboratory. Factored reports are based on data from the Vode source reports.

If the data above is in black, it is directly from a Vode source report. If it is in grey, it is factored from Vode source reports. Reference details on Vode source reports can be found on the [IES File Finder](#) page on [vode.com](#).



**IES Report**

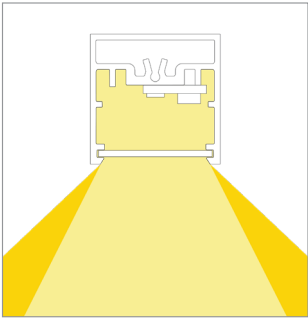
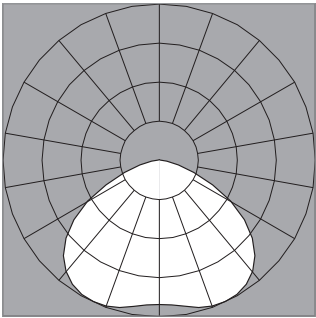
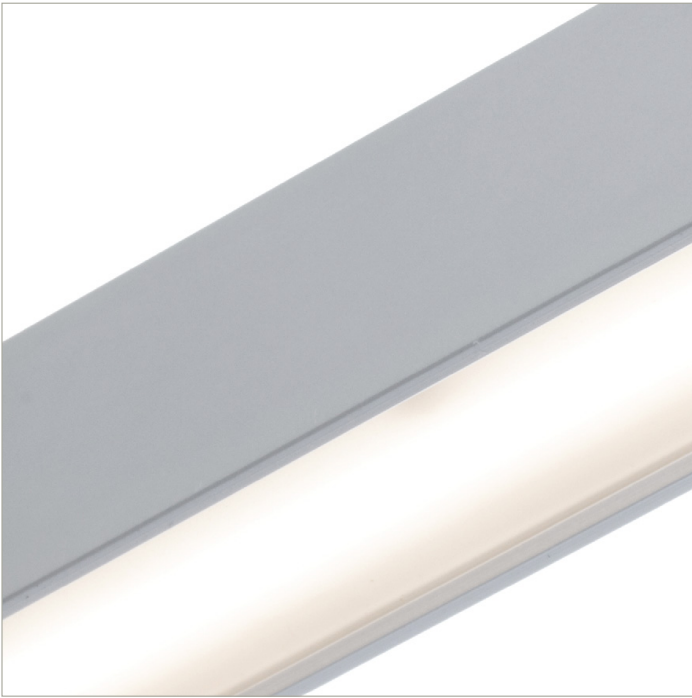
**BoxRail® | 107 | 120° FlyWing™ | 80 CRI | HO**

107-BX-XX-4-48-XX-XX-XX-X-X-Z-HO-35-G2-X-XX-X

	2700K	3000K	3500K	4000K
Efficacy - Lumens per Watt	104	107	109	112
Total Lumens, 4' rail length (1219mm)	5092	5253	5360	5468
Lumens per foot (305mm)	1273	1313	1340	1367
Input Power (W), 4' rail length (1219mm)	49.2	49.2	49.2	49.2
Watts per foot (305mm)	12.4	12.4	12.4	12.4
CRI	85	85	85	85

Due to the large number of options in Vode’s product offering, most Vode IES reports are factored reports prepared from source reports. Source reports are the IES test reports prepared for Vode by an NVLAP accredited photometric test laboratory. Factored reports are based on data from the Vode source reports.

If the data above is in black, it is directly from a Vode source report. If it is in grey, it is factored from Vode source reports. Reference details on Vode source reports can be found on the [IES File Finder](#) page on [vode.com](#).



**IES Report**

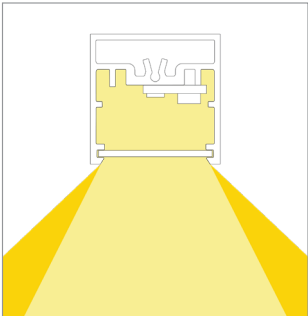
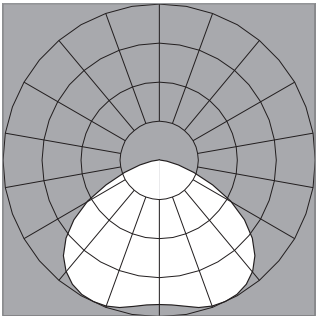
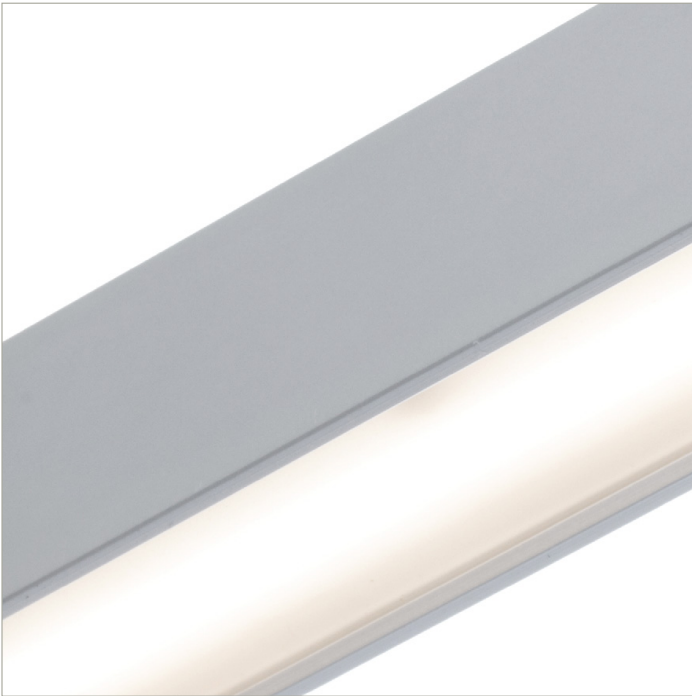
**BoxRail® | 107 | 120° FlyWing™ | 90 CRI | LO**

107-BX-XX-4-48-XX-XX-XX-XX-X-X-Z-LO-359-G2-X-XX-X

	2700K	3000K	3500K	4000K
Efficacy - Lumens per Watt	78	80	82	83
Total Lumens, 4' rail length (1219mm)	1155	1192	1216	1240
Lumens per foot (305mm)	289	298	304	310
Input Power (W), 4' rail length (1219mm)	15.0	15.0	15.0	15.0
Watts per foot (305mm)	3.8	3.8	3.8	3.8
CRI	96	96	96	96

Due to the large number of options in Vode’s product offering, most Vode IES reports are factored reports prepared from source reports. Source reports are the IES test reports prepared for Vode by an NVLAP accredited photometric test laboratory. Factored reports are based on data from the Vode source reports.

If the data above is in black, it is directly from a Vode source report. If it is in grey, it is factored from Vode source reports. Reference details on Vode source reports can be found on the [IES File Finder](#) page on [vode.com](#).



IES Report

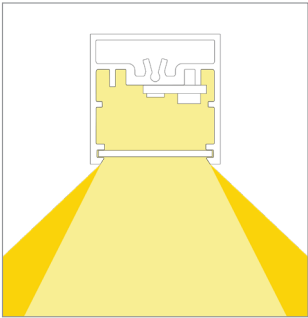
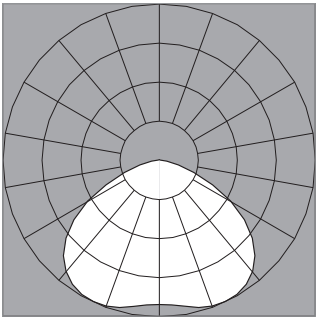
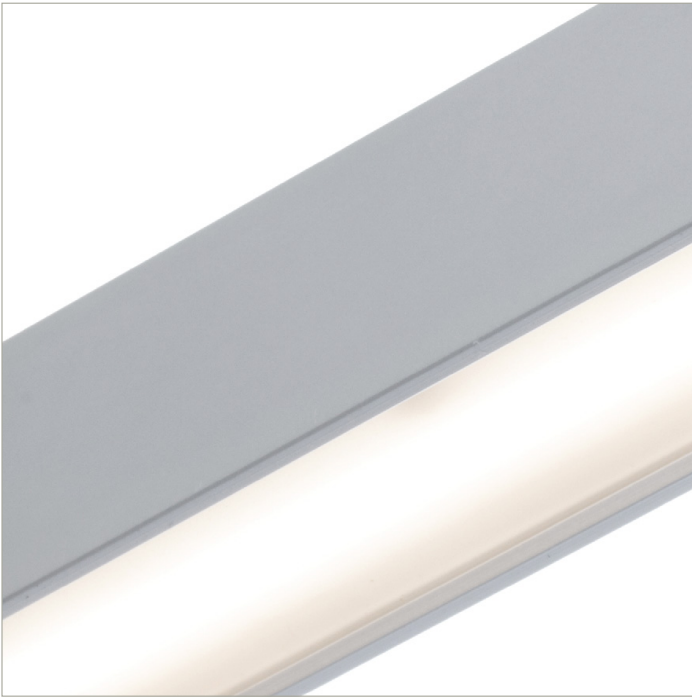
BoxRail<sup>®</sup> | 107 | 120° FlyWing<sup>™</sup> | 90 CRI | SO

107-BX-XX-4-48-XX-XX-XX-X-X-Z-SO-359-G2-X-XX-X

	2700K	3000K	3500K	4000K
Efficacy - Lumens per Watt	96	99	101	103
Total Lumens, 4' rail length (1219mm)	2311	2384	2432	2481
Lumens per foot (305mm)	578	596	608	620
Input Power (W), 4' rail length (1219mm)	24.1	24.1	24.1	24.1
Watts per foot (305mm)	6.1	6.1	6.1	6.1
CRI	96	96	96	96

Due to the large number of options in Vode’s product offering, most Vode IES reports are factored reports prepared from source reports. Source reports are the IES test reports prepared for Vode by an NVLAP accredited photometric test laboratory. Factored reports are based on data from the Vode source reports.

If the data above is in black, it is directly from a Vode source report. If it is in grey, it is factored from Vode source reports. Reference details on Vode source reports can be found on the [IES File Finder](#) page on [vode.com](#).



IES Report

BoxRail® | 107 | 120° FlyWing™ | 90 CRI | HO

107-BX-XX-4-48-XX-XX-XX-XX-X-X-Z-HO-359-G2-X-XX-X

	2700K	3000K	3500K	4000K
Efficacy - Lumens per Watt	90	93	94	96
Total Lumens, 4' rail length (1219mm)	4390	4529	4621	4714
Lumens per foot (305mm)	1098	1132	1155	1178
Input Power (W), 4' rail length (1219mm)	49.2	49.2	49.2	49.2
Watts per foot (305mm)	12.4	12.4	12.4	12.4
CRI	96	96	96	96

Due to the large number of options in Vode's product offering, most Vode IES reports are factored reports prepared from source reports. Source reports are the IES test reports prepared for Vode by an NVLAP accredited photometric test laboratory. Factored reports are based on data from the Vode source reports.

If the data above is in black, it is directly from a Vode source report. If it is in grey, it is factored from Vode source reports. Reference details on Vode source reports can be found on the [IES File Finder](#) page on [vode.com](#).